

da Vinci

Watercolour brushes made from natural hair

KOLINSKY RED SABLE - THE BEST CHOICE

Series 10 MAESTRO Sharp Round: This brush has European style shaping with an extra-sharp point and the fastest action at the tip. Available from size 10/0 to 50. Our best seller internationally.

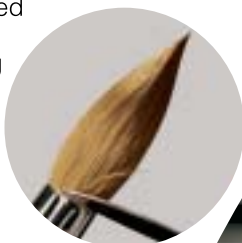
Series 11 MAESTRO Traditional Full Belly Round:

Traditional English Shaping. Available from size 5/0 to 24.

Series 35 MAESTRO Long Tapered

Round: The unique taper is great for fast, loose watercolor painting and is a favorite amongst illustrators, cartoonists, and film animators. Great for drawing long, clean lines.

Available from size 000 to 24.



Series 1311 Kolinsky Flat wash &

Series 1310 Kolinsky One Stroke:

Thick belly feeds sharp painting edge, laying down even washes with great control.

Series 1200K Kolinsky Liner &

1203K Long Liner:

For fine detail and script lettering.

Series 1503: The Kolinsky Travel brush

available in all sizes from 1 to 12.

The valuable brush-head is well protected when screwed into the special artificial horn material.

THE RETOUCHING BRUSH

Series 5506* Restauro Retouch &

Series 1505 Kolinsky extra short

In the highly sensitive field of restoration, the Kolinsky red sable retouch brush is one of the most important tools. Available in extra short or short hair setting and needle-fine tip.

THE LINER

A speciality brush for the individual watercolour and ornamental painter.

The round body - with the choice of Kolinsky Red Sable (series 17) or squirrel hair body (series 5519*) - guarantees exceptional paint uptake. The needle-fine elongated tip of the red sable hair ensures a precise brushstroke and a fluent line.

SQUIRREL HAIR BRUSHES

Series 418: The *da Vinci* version of the traditional "Quill" wash brush is made from the finest Russian Blue Squirrel hair and surprises by its fine tip, extra long with hair length and the huge water-holding capacity.

Series 803: Cats' Tongue Wash:

The perfect combination of a flattened ferrule and oval tapering for perfect washes.

Series 954: Russian Blue Squirrel Bright.

Shorter hair length for more controlled washes and priming for watercolor and gouache.

Series 991*: Flat Wash. The thick reservoir of the belly is designed for maximum water holding as this brush lays down softly textured washes across the paper. Series 5590* like Serie 418 but with a ferrule.



*ESAGONAL HANDLE - explanation overleaf

da Vinci INFORMATION ABOUT
NATURAL HAIR WATERCOLOUR BRUSHES



THE KOLINSKY RED SABLE

The Siberian red sable

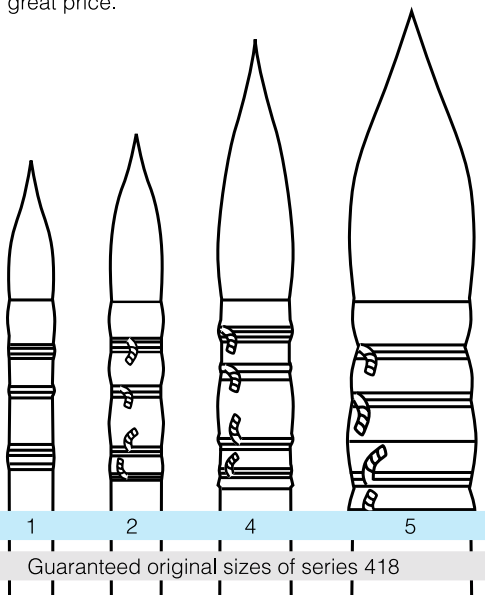
(*mustela sibirica*) also known as

Tobolsky-Kolinsky is named after the river Tobol in Siberia, east of the Urals. In this regions, hair from male winter tails grows the longest and strongest due to the extreme cold. This provides

da Vinci brushmakers with the best raw materials for Kolinsky Red Sable brushes. Expertly shaped, these brushes are unmatched for spring, resiliency, color- & water-carrying capacity and their ability to hold a sharp edge or point. Each brush features a durable, seamless, nickel- or gold-plated brass ferrule. All MAESTRO-series are tested item by item to ensure the finest tips and reliable interlocking.

Kolinsky red sable travel brushes like Series 901-902 and 1503 are specially developed for outdoor and landscape painting.

The Harbin-Kolinsky derives its name from the capital of Manchuria (Series 1526Y). This hair from Manchuria does not grow as long as Maestro sable, but offers similar features and performance for a great price.



Guaranteed original sizes of series 418



SQUIRREL HAIR

The particular attributes of 'blue' Russian tail hair is especially appropriate for watercolors. Russian Blue Squirrel hair is of the highest quality and holds a large volume of water which makes it excellent for mop and wash techniques.

Series 418: Russian Blue Squirrel hair in quills. Generously sized and hand shaped, its unique point allows for full strokes across the paper, while its huge reservoir lays down large amounts of water for wash and mop techniques. Significantly longer in length than the competition.



THE OX

Whereas manufacturers of clothes brushes use ox tail hair for their products, the artist brush maker favours the strong, elastic hair from the ox's ear and uses them especially for tempera brushes, for example series 1587.

***= ESAGONAL HANDLES** 

These prevent that annoying "rolling away" problem and provide more comfort to the artist. All series with this special handle are marked with an*



Choosing a larger size of brush for watercolour painting enables you to make a fluent changeover from fine detail to a large area.



OUR ADVICE TO PAINTERS

da Vinci complies with international standards on brush type sizes which assures the customer a generously sized brush. The most popular watercolour brushes are shown below in their actual sizes.

There are always some deviations from these standards on the market and particularly in the case of the larger size brushes this will be reflected in remarkable price differences. Never buy a brush size 'blind', check, for example, whether size 12 compares with the size reproduced in this catalogue.

Also check the tip and elasticity of the hair by fully immersing the brush in water for some time.



Albrecht Dürer
„Venus and Cupid (stealing the honey)" (detail)



IN OUR PICTURE-SEARCH

there are four deliberate mistakes. Can you find them?

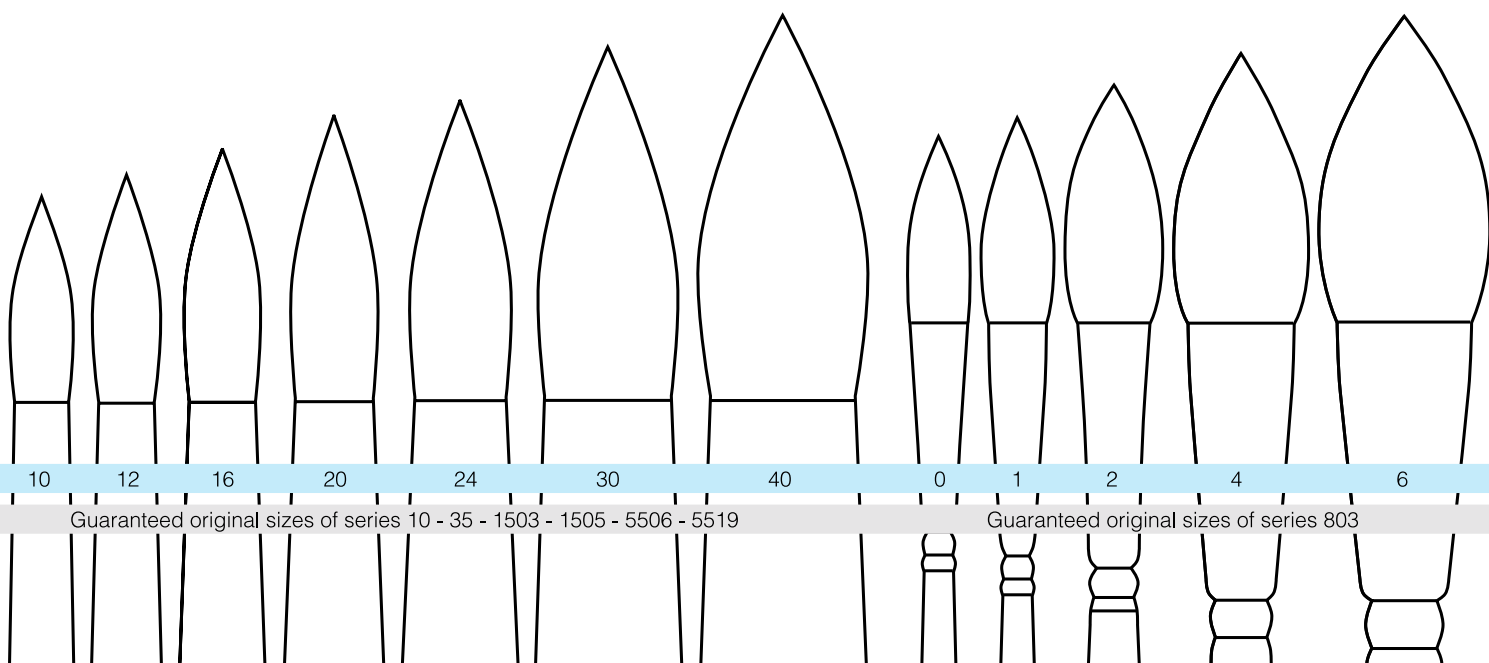


ASK your local art supply retailer for **da Vinci** BRUSH-SETS. These are carefully selected for watercolour painting outdoors and in the studio.



OUR CLEANING TIPS

Wash water soluble paints from the brush with water and vegetable soap. We recommend vegetable soap (order number 4033) which with its refurbishing action keeps the elasticity and smoothness of the brush hair. Please do not forget: Form the brush into its original shape and always allow it to dry thoroughly.



Guaranteed original sizes of series 10 - 35 - 1503 - 1505 - 5506 - 5519

Guaranteed original sizes of series 803

GREGORY DANIELS FINE ARTS

IMPORTING THE WORLD'S FINEST BRUSHES • **da Vinci** • WWW.GDFA.NET • WWW.DAVINCI-DEFET.COM
P.O. BOX 4623 • GLENDALE, CA 91222 • TEL 877.862.8892 • FAX 818.252.6995